

Figure 2B Representative blots used in figures that have correct order of conditions

Fig 2 - anti-GA Filter Trap Assay

Line 1 - TG through MS275

Line 2 - Etop through Glut

Line 3 - Positive Ctrl, Ctrl, Negative Ctrl

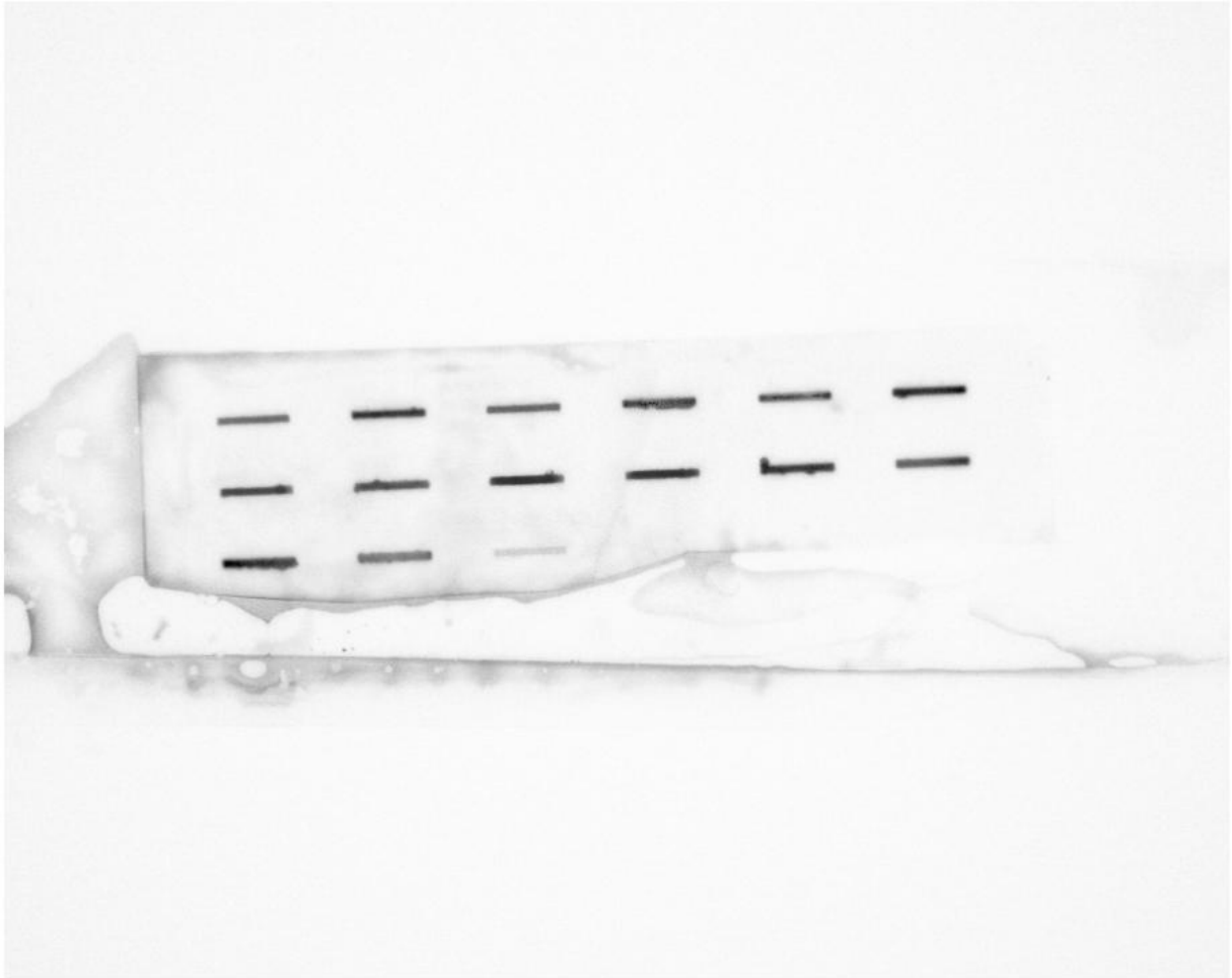


Fig 2 - anti-GP Filter Trap Assay: same order as above



Fig 2 - Anti-GR Filter Trap Assay: same order as above



Fig 2 - Anti GAPDH Filter Trap Assay

Line 1 - Not used to represent data, antigen was dispersed from poor pressure

Line 2 - TG through MS275

Line 3 - Etop through Glut

Line 4 - Ctrl

