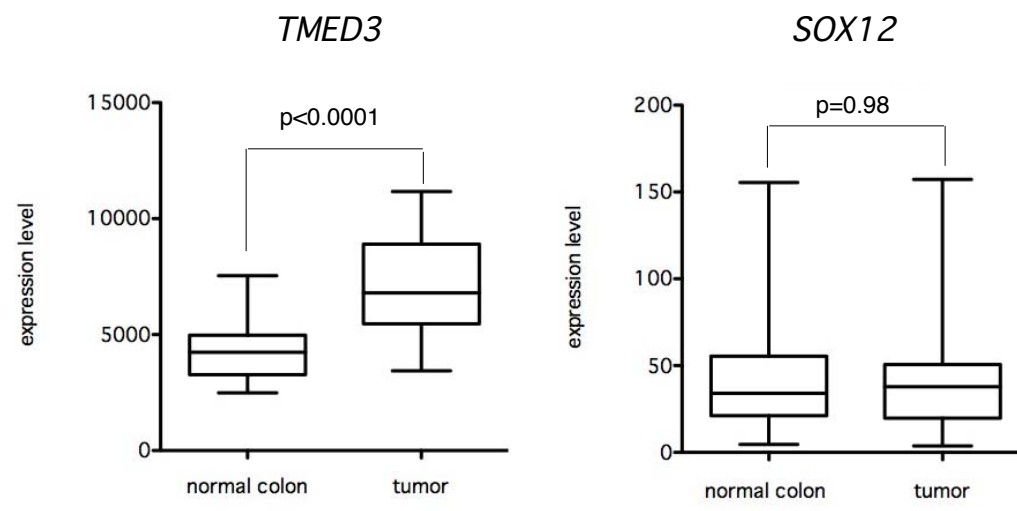


A



B

| | | <i>TMED3</i> | <i>SOX12</i> |
|------------|------|--------------|--------------|
| TMN1 | CC76 | 1.7 | 0.8 |
| | CC72 | 0.8 | 1.4 |
| TMN2 | CC74 | 1.2 | 8.6 |
| | CC79 | 1.5 | 1.1 |
| | CC80 | 1.6 | 0.02 |
| TMN3 | CC12 | 0.6 | 1.0 |
| | CC75 | 1.6 | 0.9 |
| | CC77 | 3.5 | 0.9 |
| | CC78 | 6.3 | 0.7 |
| TMN4 | CC10 | 1.7 | 2.2 |
| | CC70 | 2.3 | 1.1 |
| | CC73 | 1.1 | 1.0 |
| Liver mets | mCC1 | 2.3 | 1.4 |
| | mCC2 | 3.9 | 3.1 |

Supplementary Figure S6. *TMED3*, but not *SOX12*, expression is enhanced in colon cancers versus normal colon.

A) Box plots showing the expression level of *SOX12* and *TMED3* genes in normal and colon tumors derived from the public dataset GSE10950 (see [Fig. S7](#)).

B) RT-qPCR heat map table of the expression levels of *TMED3* and *SOX12* mRNAs as determined by RT-qPCR. Samples are those described in [Varnat et al. \(2009\)](#) plus new samples from the operating room described in [Fig. S8](#). Results are expressed as fold expression over control (using paired normal colon).