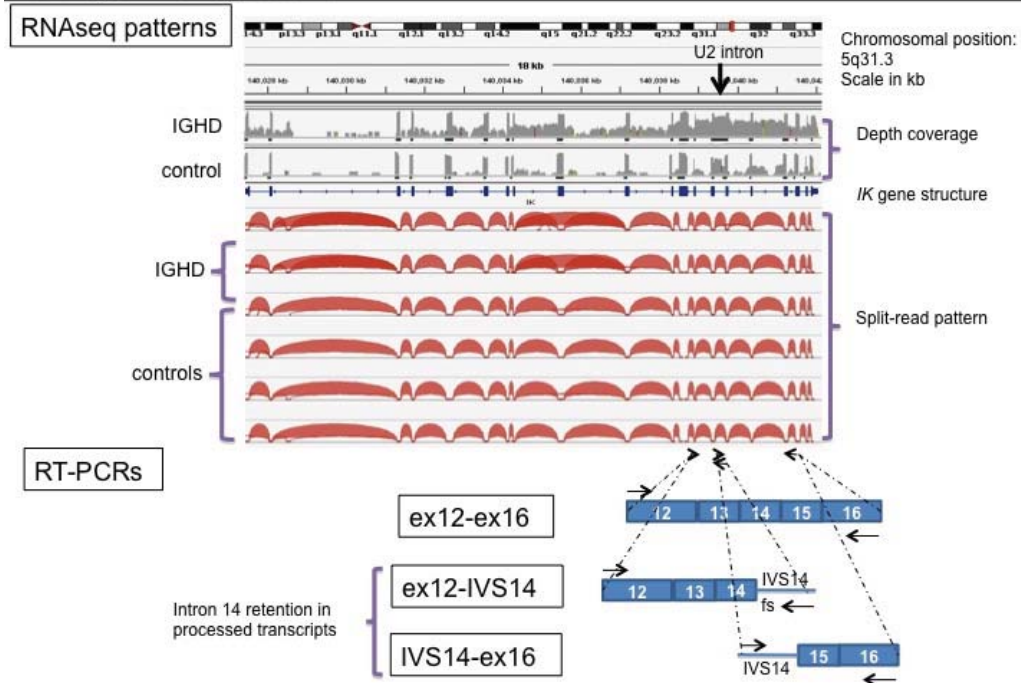
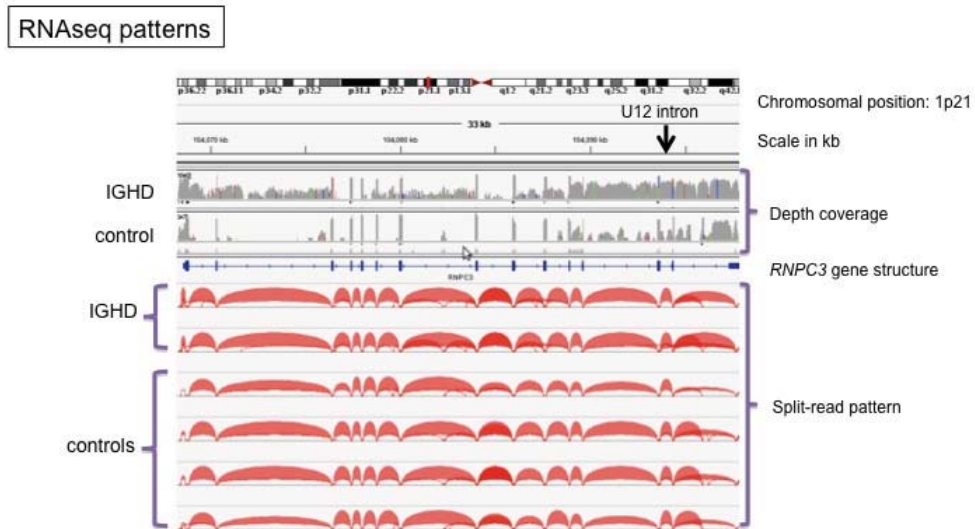


IK cytokine regulator of HLA II



Supporting figure S8: Transcription profiles of the *IK* gene. There is U12-type intron retention both in cases and controls, with apparent increased alternative splicing of U2 introns upstream in cases. By RT-PCR the normally spliced and the unspliced IVS14 (pre-mRNAs) were found both in cases and controls (not shown).

RNPC3 minor spliceosome 65kDa protein component

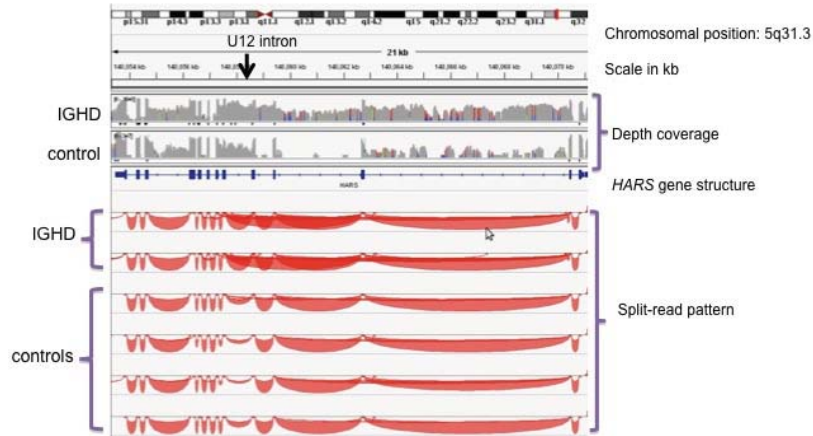


Supporting figure S9: Transcription profiles of the *RNPC3* gene. Increased intron retention (U12 and flanking U2 introns) is seen by RNAseq in patients, although a single transcript with no differences between

cases and controls was detected by RT-PCR. Interestingly, the *RNPC3* gene also harbors an intron processed by the minor spliceosome.

HARS Histidyl-tRNA Synthetase

RNAseq patterns



Supporting figure S10: RNAseq transcription profiles of the *HARS* gene. Increased intron retention (U12-type and flanking U2-type introns) along with several alternative splicing using cryptic sites is seen in patients, but also present in controls at a lower rate.